



258 Oak Tree Road, Tappan, NY 10983

info@telescript.com 201-767-6733

# Telescript's 24" Prompting System

ROBO210-PTZ

ROBO210-ENG



## Assembly Instructions

telescript.com

## **ROBO210-PTZ Parts List:**

1 - 21.5" Telescript 16x9 Prompter Monitor

1 - Power Supply w/ Remote

1 - Hood

1 - Hood Mask

1 - Monitor Mounting Plate

1 - Camera Mounting Plate

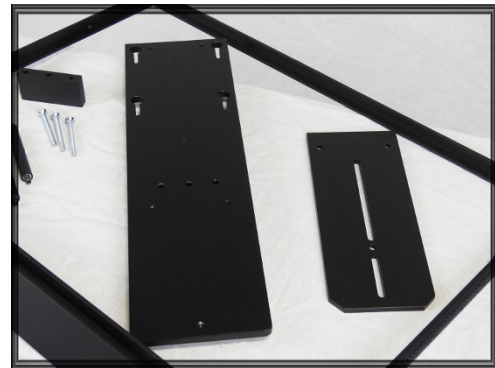
1 - Frame Riser

3 - 1/4-20 x 2-3/8 Flathead Bolts

3 - Camera Riser Poles

1 - Back Bracket w/ Beamsplitter Frame

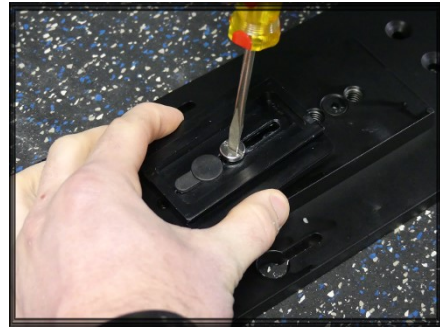
2 - 14-20 x 1 Hex Bolts w/wingnut



**Note: Your system MAY have shipped fully assembled. If that is the case, you can skip most steps in Items 1 - 7.**

1. Remove the camera heads wedge plate from the camera head and attach to the bottom of the monitor mounting plate. Depending on the type of camera you are using, you will need to make sure that you position this plate in a location that brings the balance of the system to the center. It may take more than one attempt to get this position correct.

Note: If you are not using a head with your tripod, you can screw the monitor plate directly to a tripod that has a 3/8 threaded bolt on top or use our Quick Adapter (sold separately).



2. Now attach the monitor plate to the tripod head and secure it in place.



3. Screw the three camera plate posts into the three threaded holes in the monitor plate. You can use the hole in the post to insert a screwdriver through to tighten if necessary.

4. Remove the three Allen bolts from the top of the posts. Place the camera plate on top of the posts and align the posts with the corresponding holes. Make sure the side with the recessed holes are face up before you insert and tighten the Allen bolts.





5. On the bottom of the monitor plate you will see three equidistant, recessed holes. Insert one of the three 1/4-20 x 2 3/8 bolts through the center bottom of the monitor plate. Slide the frame riser over the top of the bolt.



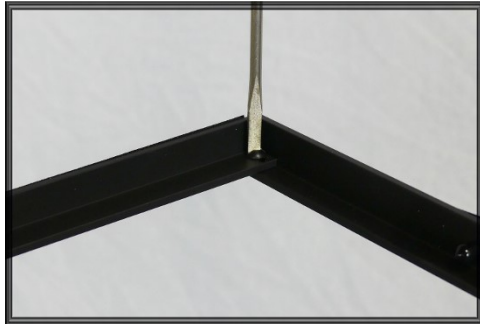
Note: If completing these steps becomes difficult, having a second person, or bringing the hardware to a workbench will help make it easier.

6. Thread the bolt into the center threaded hole on the bottom of the back bracket (which is attached to the beamsplitter frame) and hand tighten.



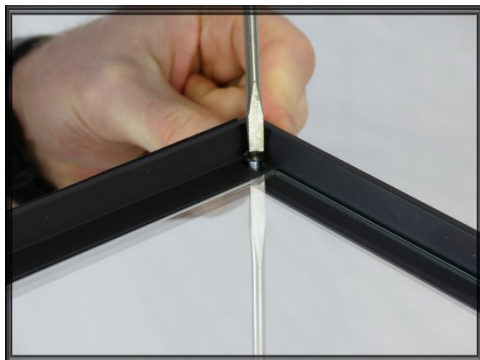
7. Thread the remaining two bolts through the bottom of the monitor plate and tighten using a flathead screwdriver. Do not fully tighten until all three are threaded into the bracket holes.

8. Your assembled hardware should now look like the photo on the right.



9. The top rail of the beamsplitter frame has two small flathead screws holding the rail to the frame. Remove both screws and remove the top beamsplitter rail.

10. Slide the beamsplitter glass into the beamsplitter frame. Be sure that the reflective side of the glass is facing down in this step. The reflective side of the glass has a round sticker in one of the corners.



11. Reattach the top rail of the beamsplitter frame and attach with the same small screws you removed earlier. Be sure to not overtighten.

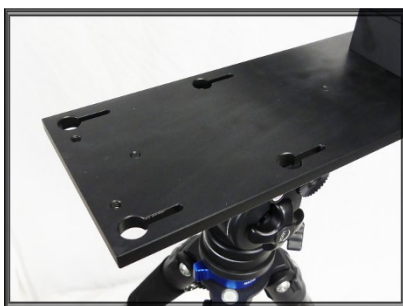
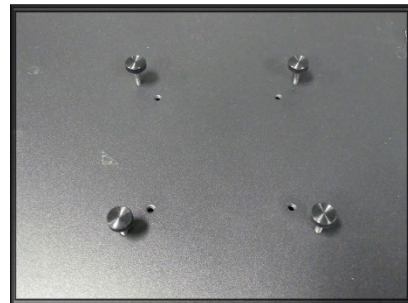


12. Turn the two silver dials on the rear of the back bracket so the flat side is facing upwards.



13. Lift the beamsplitter frame up until it is in its most upright position and turn the dial until it is tight against the beamsplitter frame.

14. Partially thread the four monitor screws into the outer threaded holes on the bottom of the monitor.

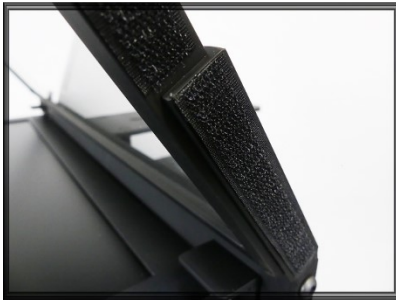


15. On the monitor plate you will see four keyholes. Guide the thumb screws in the bottom of the monitor into these keyholes and slide the monitor back as far as you can. Tighten the thumbscrews.

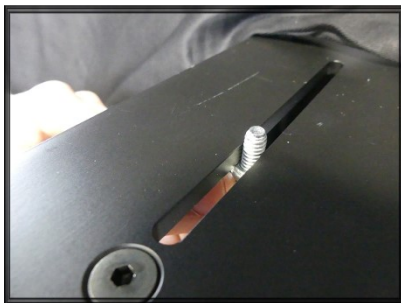


Note: Be sure you have your monitor facing the proper direction. The edge of the monitor with the Telescript logo is the front of the monitor and should be facing you.

16. The beamsplitter frame has Velcro along the sides. Attach the hood to the frame using these Velcro strips.

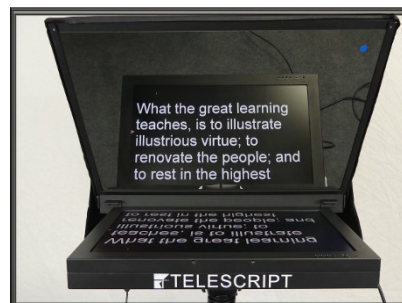


17. Take your hood shroud and attach it to the back of the hood using the Velcro on the edges of the hood and shroud.



18. Your camera now can mount on top of the camera plate behind the beamsplitter using either your camera manufacturers mounting plate, or by using the provided 1/4-20 bolt with wingnut that was sent with your system. Depending on the type of camera, position the lens as close to the beamsplitter as you can (without touching the glass). Cover the camera with the hood shroud.

19. This is what your system should now look like.



# Accessories

If you've purchased your ROBO210 system with a **ClockOne** or **TallyOne**, mounting is very easy. To mount your **ClockOne**, simply remove the two Philips head screws on the front of the monitor (Photo A). Then insert the two long bolts provided with your clock through the holes at the top center of the clock. Then thread the bolts into the two holes on the face of the monitor until tight. (Photo B).

PHOTO A



PHOTO B



If you've purchased a **TallyOne**, your top rail of the beamsplitter frame will have two threaded holes in it (Photo C). Simply attach the provided tally bracket (Photo D), and then attach the tally to the bracket (Photo E).

PHOTO C



PHOTO D



PHOTO E





# **ROBO210-ENG Studio Mount (23" Plate)**

If you've purchased a ROBO210-ENG system for mounting non-PTZ cameras, your hardware will be slightly different from what you see in this manual.

The PTZ camera platform is eliminated for this configuration and a 23" plate is used to mount your camera.

Do not mount the monitor, insert the glass or attach the hood and mask at this time.

Your back bracket will have either recessed grooves or recessed holes (Photo A).

Attach the wedge plate from your camera head to the bottom of the 23" plate (the further forward you place this plate, the more back heavy the system becomes).

Using the bolts from the 23" plate (Photo B) attach the 23" plate to the back bracket **first**, before assembling the rest of the hardware (Photo C).

Once the wedge plate is mounted and the 23" plate is secured to the frame hardware, you can now mount to your camera head, install the monitor, glass, hood and mask, as well as mount your camera.

**Note:** This system can also mount as a stand alone system using our Quick Adapter for tripods (sold separately)



PHOTO A



PHOTO B

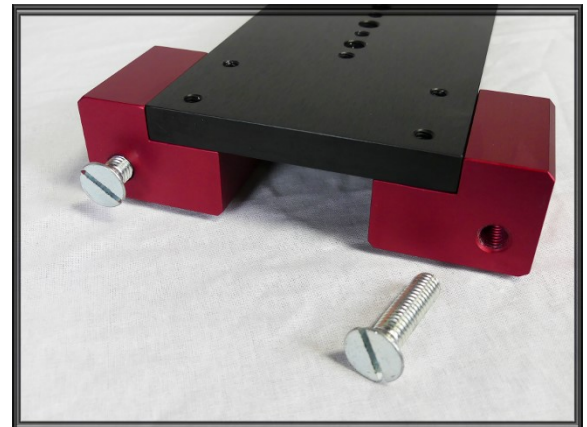


PHOTO C

